



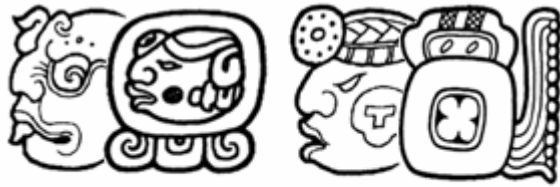
The Ahau Chronicles



Volume 48

August 5, 2012

Subscribers: 474



7 Ahau 3 Yaxkin

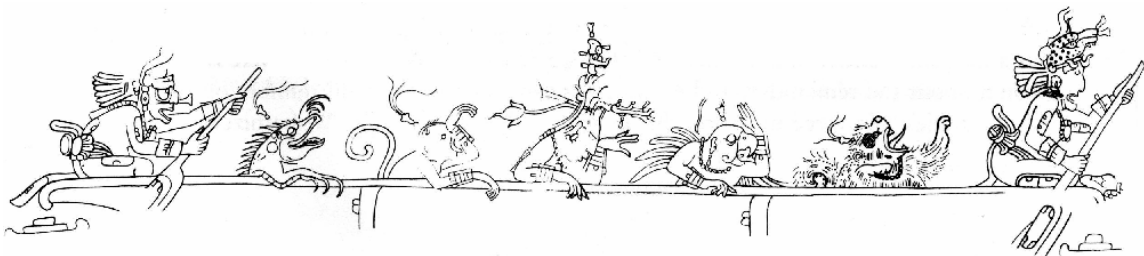
Long Count: 12.19.19.11.0



Brazil Expedition

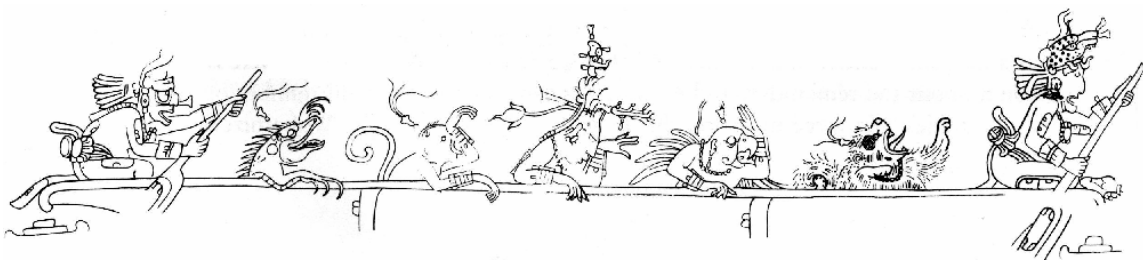
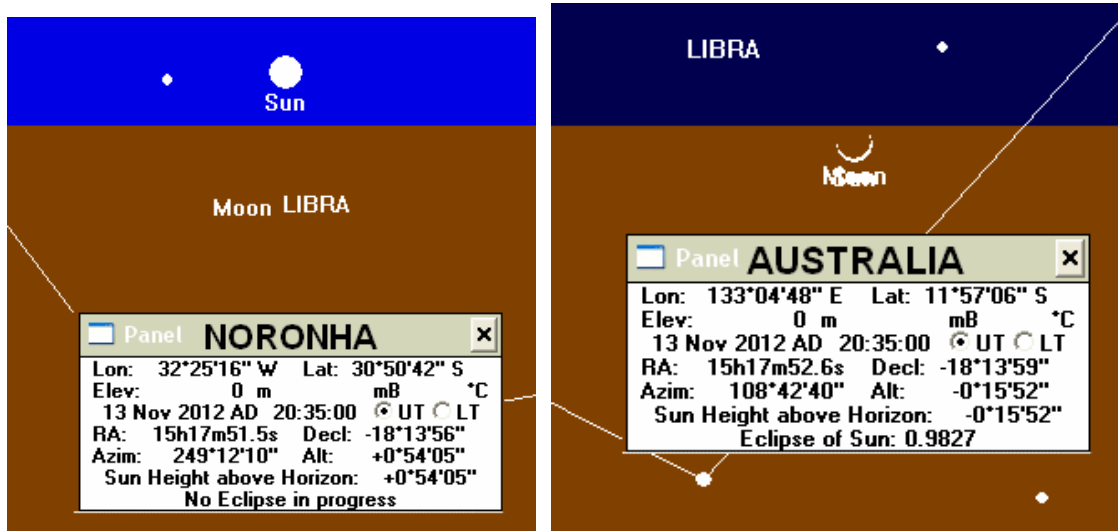


Tomorrow morning I will board a plane in New York and fly to Recife, Brazil where I will meet with Fernando Paiva Melo who has introduced me to a second Apocalypse Island. We will join Guilherme Coutinho and fly to a small island off the coast called Fernando de Noronha. The island was featured in Volumes 28 & 29 of this newsletter where I presented some of my early research in collaboration with Mr. Melo. There exists on Noronha an impressive megalith some 1,000 feet tall known as the Morro do Pico, another piece of the puzzle in the mystery of 2012 crafted by Chan Bahlum.

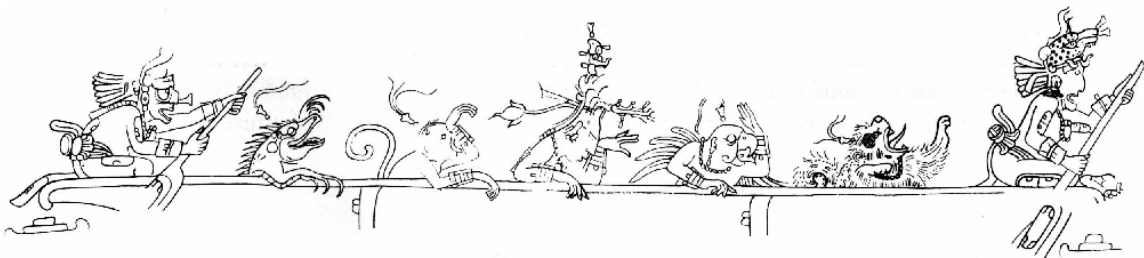
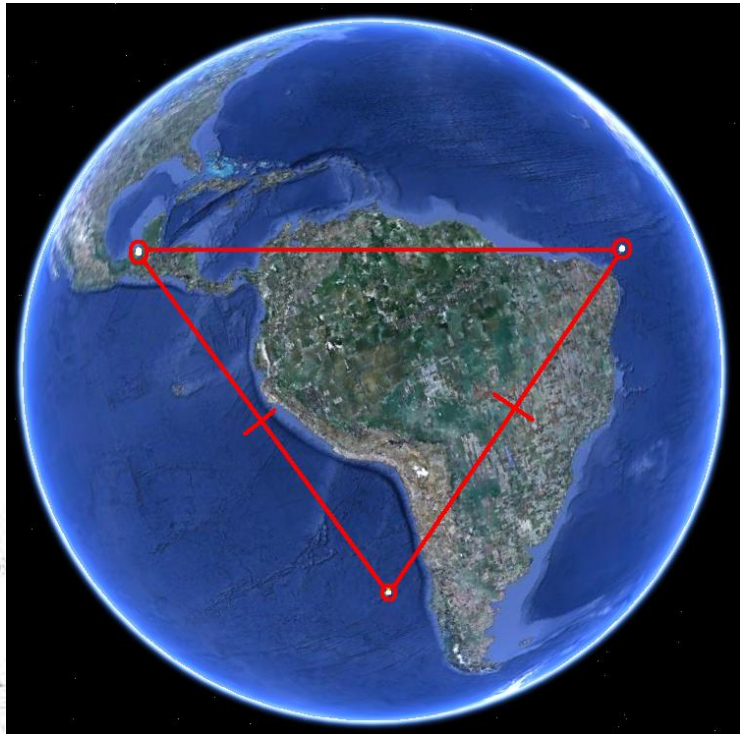


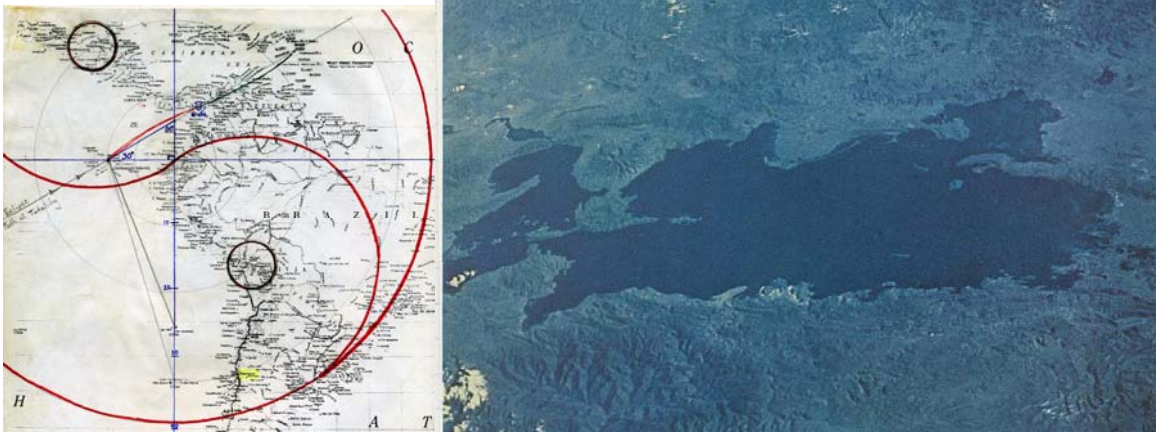


Like my monument on Robinson Crusoe Island, Morro do Pico exhibits light-and-shadow play that can accentuate its features in a way that it appears to contain a wizened face looking inward from the sea to the interior of the island. Further down the coast are the Two Brothers islands reminiscent of the Hero Twins of the Mayan creation myth, the Popul Vuh. These islands create a gateway into which the sun will set on November 13th, the Ahau day of the final Total Solar Eclipse of 2012 and the closing of the 13th Baktun of the Mayan calendar. With the sun one degree above the horizon at sunset, the eclipse shadow touches down on the other side of the world in northern Australia at sunrise.



The monument on Robinson Crusoe Island consists of the towering Sun God spire in front of a crouching jaguar. Both of these images are featured in the Temple of the Sun inscription housed in the sacred temple at Palenque. Behind these images in the Palenque inscription are a pair of crossed spears. If we imagine these spears as a type of measuring device like a navigator's instrument then they suggest the identical distances to the center of the Cross Group of Temples in Palenque and to the Morro do Pico as measured from the Crusoe island monument. Using exacting GPS measurements I have shown that these distances are *perfectly* equal over a distance of more than 3,000 miles.



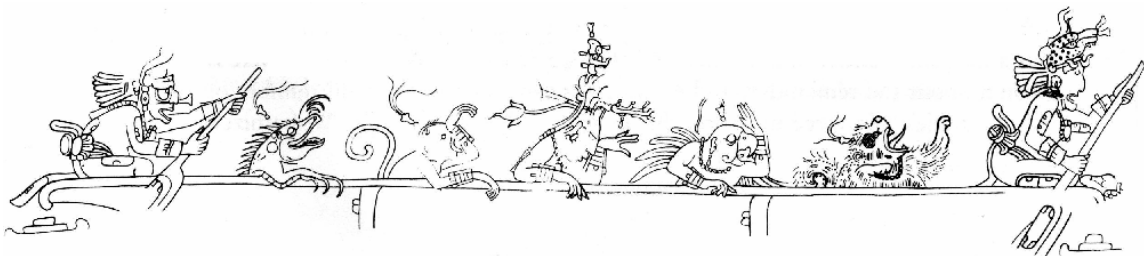


The sacred geography of the Western Hemisphere extends to the mirroring of Palenque through the equator reflecting the yin-yang relationship with the jaguar lake of the Underworld, Lake Titicaca. This magical lake, the highest navigable waterway in the world, was known to the ancient Inca as the “Lake of the Puma” suggesting a familiarity with its overall outline resembling a feline figure pouncing on a rabbit. This relationship was revealed to me after my 1998 eclipse expedition to Colombia, a prelude to the even greater revelations that were to come associated with the 1999 eclipse across Europe at the end of the second millennium of our modern calendar.

We are left to ponder how it is that a supposed Stone-Age culture was able to personify the continental geography of the Western Hemisphere with exacting precision, working the elemental symbols into an elaborate iconography reflecting the natural order of the world. At first glance we might conclude that Chan Bahlum was the greatest astronomer of his day, a true Copernicus of the New World. But the calendar that he used was already thousands of years old, fully formed in its first known expressions, stubbornly indicating the cosmic events of 2012 in the centuries before the era of Christ.



As the serpent of Central America reaches down toward the jaguar of the Underworld, the name of Chan Bahlum (Serpent Jaguar) is reflected in the geography of the earth. The jaguar head of South America cranes its neck upwards to meet the kiss of the serpent, a symbolic gesture uniting North and South through the sacred wisdom of the ancients. The imagery is explicit and overt, staring us in the face, daring us to accept its primacy. And though our assumed superiority is seductive, we ignore these clear signs to our own disadvantage.



With only 100 days left until the final Total solar Eclipse of 2012 and the closing of the Mayan Great Cycle I have refocused the MAYAPOLOOZA project as described below:

MAYAPOLOOZA, November 13-14, 2012 – A global media event of cosmic proportions. Join participants from across the world to witness the final Total Solar Eclipse of 2012 on the sacred Ahau day of the Mayan calendar. More than 5,000 years in the making, this event promises to reveal the meaning behind the mystery of the Mayan calendar and to inaugurate the next World Age.

Description: From multiple locations across three continents and even outer space, viewers can watch the total solar eclipse touch down in Northern Australia then move east across the Pacific toward Robinson Crusoe Island off the coast of Chile. There, the ancient Sun God monument will witness the conclusion of the eclipse one degree above the horizon at sunset. Streaming live video will connect sites in Australia, Mexico, Chile and Brazil and beam satellite imagery to a worldwide audience of millions.



Since the sunset on Fernando de Noronha island will mark the beginning of the eclipse, it is here I will begin preparations for the MAYAPOLOOZA event. We will look for sponsors and collaborators in Brazil and search the island for the perfect venue. From there we will branch out to other groups in Australia, Chile, and Mexico, seeking kindred spirits to assist in the ultimate tribute to the Maya and their magical calendar by celebrating the last cosmic spectacle of the 13th Baktun, an eclipse built into the heart of their sacred timekeeping. Using modern technology we will allow countless viewers from around the world, regardless of their geographic location, to view the eclipse and participate alongside others more fortunate to attend in person. By forging a global awareness of the eclipse we will enable multitudes to witness the endtimes revelations that will most certainly accompany this spectacular conjunction. Prepare for the return of the great king, Palenque Blood Lord Chan Bahlum....

